



## Dual-Band Wi-Fi GPON Router GWN7062G

The GWN7062G is a secure dual-band Wi-Fi GPON router powered by Wi-Fi 6 (802.11ax) technology. It provides dual-band 2x2 MU-MIMO with DL/UL OFDMA technology and supports wireless Mesh networking while providing 2.488Gbps downlink speeds and 1.244Gbps uplink speeds through the GPON interface. The GWN7062G supports dual-WAN, a GbE and a GPON port and uses a 1G quad-core A55 processor to guarantee maximum wired and wireless network speeds, making it ideal for smart home office, home automation, 4k ultra-HD, streaming media, web and video meetings, online gaming and more. It provides enterprise-grade security protection to ensure secure Wi-Fi and VPN access, including unique security certificates and random default passwords. By providing accelerated Wi-Fi speeds, IP routed subnet, parental control and other advanced security features, the GWN7062G offers internet and telecom service providers a cost-effective and powerful GPON delivery system.



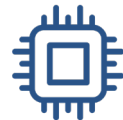
Provides 2.488Gbps downlink speeds and 1.244Gbps uplink speeds through GPON



Dual-band 2x2:2 MIMO



Built-in VPN support allows easy access to corporate networks for remote employees



1 GHz quad-core A55 processor with 512MB RAM and 256MB NAND



Dual-WAN(1xGPON,1xGbE)



Parental control features including schedule internet usable time, Mac Blocking, URL blocking



Rich firewall features including Anti-DoS, traffic rules, NAT and ALG



2Gbps NAT routing performance, 64K NAT Session

<b>Memory</b>	512MB RAM, 256MB NAND
<b>CPU Frequency</b>	1GHz quad-core A55
<b>NAT Sessions</b>	64K NAT sessions New sessions per second $\geq$ 300
<b>NAT Routing Performance</b>	2Gbps
<b>Wi-Fi Standards</b>	IEEE 802.11 a/b/g/n/ac/ax
<b>Antennas</b>	5 antennas (5DBi)
<b>Wi-Fi Data Rates</b>	IEEE 802.11 b/g/n/ax 2x2, MU-MIMO IEEE 802.11 a/n/ac/ax 3x3:2SS, MU-MIMO (160MHz) 2.4G : 574Mbps, 5G : 2402Mbps <i>*Actual throughput may vary depending on many factors including environmental conditions, distance between devices, radio interference in the operating environment and mix of devices in the network</i>
<b>Frequency Bands</b>	2.4GHz radio: 2400 - 2483.5 MHz 5GHz radio: 5150 - 5895 MHz <i>*Not all frequency bands can be used in all regions.</i>
<b>Channel Bandwidth</b>	2.4G: 20 and 40 MHz 5G: 20, 40, 80 and 160 MHz
<b>Maximum TX Power</b>	Up to 175 meters <i>*Coverage range can vary based on environment</i>
<b>Receiver Sensitivity</b>	<b>2.4G:</b> 802.11b: -97dBm@1Mbps, -89dBm@11Mbps; 802.11g: -93dBm @6Mbps, -75dBm@54Mbps; 802.11n 20MHz: -73dBm @MCS7; 802.11n 40MHz: -70dBm @MCS7; 802.11ax 20MHz: -64dBm @ MCS11; 802.11ax 40MHz: -63dBm @MCS11 <b>5G:</b> 802.11a: -93dBm @6Mbps, -75dBm @54Mbps; 802.11n: 20MHz: -73dBm @MCS7; 802.11n 40MHz: -70dBm @MCS7 802.11ac 20MHz: -70dBm@MCS8; 802.11ac: HT40:- 66dBm @MCS9; 802.11ac 80MHz: -62dBm @MCS9; 802.11ax 20MHz: -64dBm @ MCS11; 802.11ax 40MHz: -61dBm @MCS11;802.11ax 80MHz: -58dBm @MCS11;802.11ax 160MHz: -55dBm @MCS11
<b>Wi-Fi and System Security</b>	Enable/Disable Wireless Radio Supports WPA / WPA2 / WPA3
<b>MIMO</b>	2x2, MU-MIMO
<b>GPON Standards</b>	ITU-T.984.X Standard
<b>GPON Speeds</b>	RX: 2.488Gbps / TX: 1.244Gbps
<b>Operating Wavelengths</b>	US 1310 nm / DS 1490nm
<b>Normal Optical Power Range</b>	Class B+ Optical System Maximum Receive Sensitivity: -8 dBm Minimum reception sensitivity: -28 dBm
<b>Network Interfaces</b>	3 GbE LAN(RJ45), 1 GbE WAN/LAN(RJ45), 1 GPON WAN(SC/APC)
<b>Auxiliary Ports</b>	1x WPS, 1x Reset, 1x USB3.0, 1x DC in, 1x Power Button
<b>Multicast</b>	IGMP v2 (RFC 2236) & IGMP v3 (RFC 3376)
<b>Network Protocols</b>	IPv4, IPv6 and IPv4/IPv6 dual-stack, IEEE802.1Q, IEEE 802.1p, IEEE802.3, IEEE 802.3u, IEEE 802.3x, IEEE802.3ab
<b>IP Routing</b>	Static IP / PPPoE / DHCP/ Bridge
<b>Firewall</b>	DDNS, NAT/NAPT, UPnP, SNTP, Port-Forwarding, DMZ, Anti-DoS
<b>Security</b>	Application&protocol filtering and traffic statistics with Deep Packet Inspection, IP/MAC/DNS filtering
<b>IPSec VPN Performance</b>	500+Mbps
<b>VPN</b>	IPSec: IPSec Encryption: DES, 3DES, AES IPSec Authentication: MD5, SHA-1, SHA2-256 IPSec Key Exchange: Main/Aggressive Mode, Pre-shared Key, DH Groups 1/2/5/14 IPSec Protocols: ESP
<b>OLT Systems Supported</b>	HUAWEI, ZTE, Fiberhome, NOKIA, etc
<b>Power Supply</b>	12V/1.5A
<b>Environmental</b>	Operation: -5°C to 55°C Storage: -20°C to 70°C Humidity: 5% to 95%
<b>Physical</b>	200*125*36 mm
<b>Compliance</b>	FCC, CE, RoHS